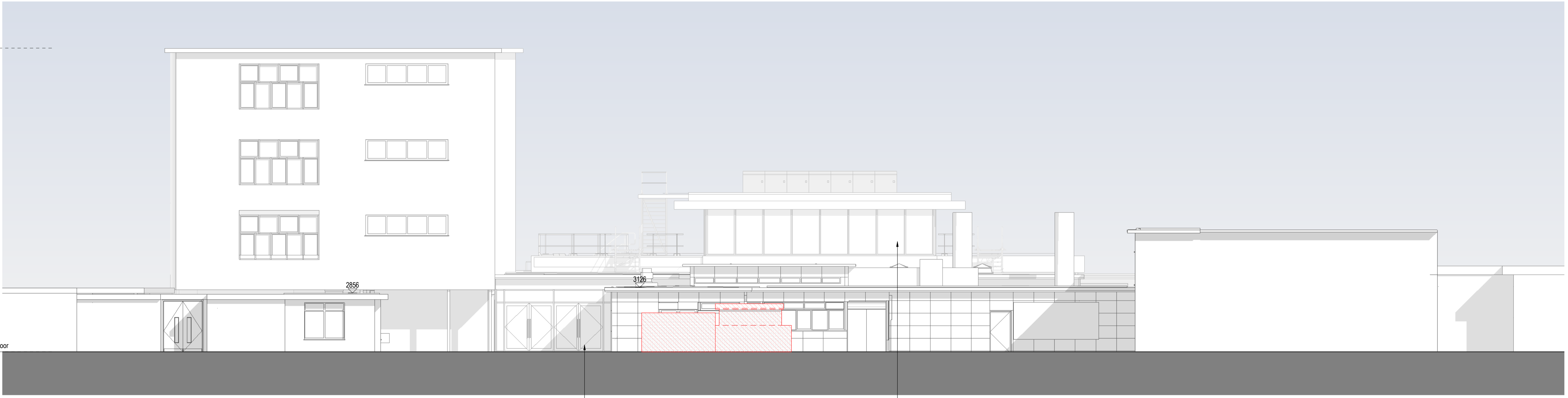


RF - Tower  
14750

00 - Ground Floor  
0



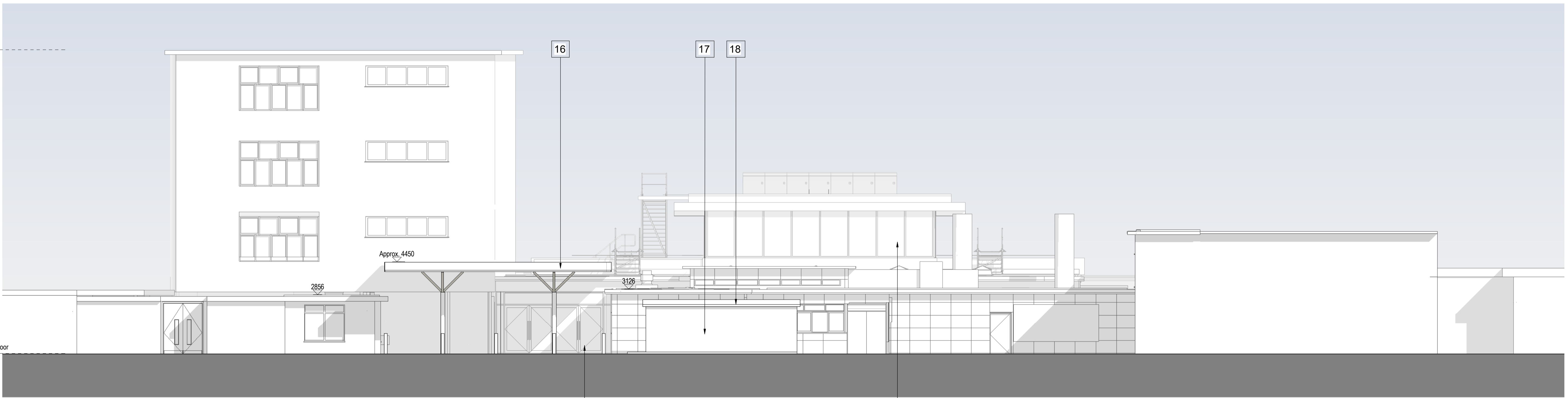
Elevation Canopy - North Existing Phase 4  
Scale: 1 : 100  
REFER TO DRAWING NO.301 ALSO

Proposed Dining Extension (Phase 1)

Proposed Dining Extension (Phase 1)

RF - Tower  
14750  
183

00 - Ground Floor  
0



Elevation Canopy - North Proposed Phase 4  
Scale: 1 : 100

Proposed Dining Extension (Phase 1)

Proposed Dining Extension (Phase 1)

KEY: EXTERNAL ELEVATIONS	
1	Product: Dining Cladding Colour: Equitone Lunata Hessian or similar to complement existing brown concrete panels
2	Product: Curtain Wall with Window & Doors Colour: Dark grey
3	Product: Brise Soleil Colour: White
4	Product: 6th Form Cladding Colour: Equitone Natura - Quartz White
5	Product: Existing 6th Form Trepsa Cladding Colour: White
6	Product: Plinth Colour: Dark grey to match
7	Product: Window & Door with louvers Colour: Dark grey to match existing
8	Product: Curtain Wall Colour: Dark grey
9	Product: Roof Fascia Colour: Dark grey
10	Product: Collapsible railings Colour: Galvalume

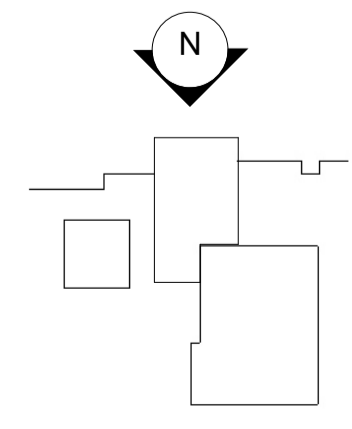
11	Product: Rooflight Colour: to match existing
12	Product: Windcatcher Colour: Mill finished aluminium
13	Product: Fixed Roof Access
14	Product: External Door Hoop Colour: Refer to landscape drawings
15	Product: Existing plant
16	Product: Metal canopy (with clear glazing) Colour: White
17	Product: Render finish Colour: M3 grey to match existing cladding
18	Product: Corrugated metal roof Colour: M3 grey
19	Product: Windows Colour: Dark grey
20	Product: PV Panel

**DEMOLITION NOTES:**

- Existing elements to be demolished.
- Demolished External Walls

Refer to plans & sections also.

NOTE: Products and colours to be equal or equivalent.



Elevation Legend

**CONSTRUCTION PHASE HAZARD IDENTIFICATION**  
in accordance with the Construction (Design & Management) Regulations 2015.

**CDM**  
The hazard sign is a notification to other designers and contractors of foreseeable exceptional risks resulting from the design activities carried out by HLM Architects Ltd, which are beyond those reasonably expected to be identified by a competent person as defined in the 'Construction (Design and Management) Regulations 2015 - Regulation 9 & 10 and Industry Guidance for Designers (Section 4) published by the CIBS (2015)

DRAWING REVIEWED	yes or no	YES
EXCEPTIONAL RISKS / RISK CONTROL MEASURES	note or see warning triangle	see warning triangle

Project	St Crispin's School	Title	GA ELEVATIONS (PHASE 4) CANOPY	Pos	PLANNING APPLICATION ISSUE	06/12/2022	AL	KP
Client	WOKINGHAM BOROUGH COUNCIL	Scale @ A1	1:100@A1	Pos	PLANNING APPLICATION ISSUE	12/12/2022	AL	KP
		Drawn	AL	Pos	DRAFT ISSUE	12/12/2022	AL	KP
		Date	06/12/2022	Pos	DRAFT ISSUE	13/10/2022	AL	KP
		Checked	KP	Rev	Description	Date	By	CHK
		Revision	S4 STAGE APPROVAL					
		Revision No.	STC-HLM-P4-XX-DR-A-00304					
		Revision	P05					

Notes Check all dimensions on site. Do not scale from this drawing. Report any discrepancies and omissions to HLM Architects. This Drawing is Copyright©

1:500  
1:100

50 M  
10 M

© HLM Architects  
Wool + Tallor Building  
Fifth Floor  
10-12 Aisle Street  
London E1 8DE

www.hlmarchitects.com  
T. +44 (0) 20 7921 4800  
F. +44 (0) 20 7921 4850  
london@hlmarchitects.com

This page is intentionally left blank